



Crystal Peak Park

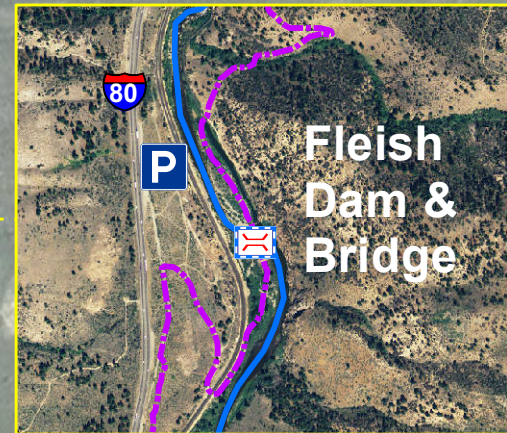


Washoe Co.

Floriston, CA to Verdi, NV 10.8 Miles

- Bikeway**
- Dirt Trail
 - Shoulder of Road
 - Railroad
 - Truckee River
 - Parking
 - Restroom
 - Trailhead
 - Bridge
 - Locked Gate
 - Mile Markers

Caution Steep Road !



Fleish Dam & Bridge



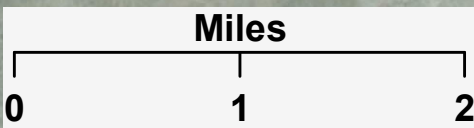
Farad Exit (Mystic Rd)



Floriston Exit



Map by Sam Limerick
Date: 8/31/2016
NAD 1983 UTM Zone 10N



Sierra Co.
Nevada Co.

CA NV

Crystal Peak Park

Quillaci Ranch Rd

TMWA Utility Rd

Fleish Dam & Bridge

Farad Exit
Farad Power Station

Floriston